

# Achieve high-esthetic and predictable results using Nobel Biocare's proven solution

## 1 High primary stability using NobelActive® implants

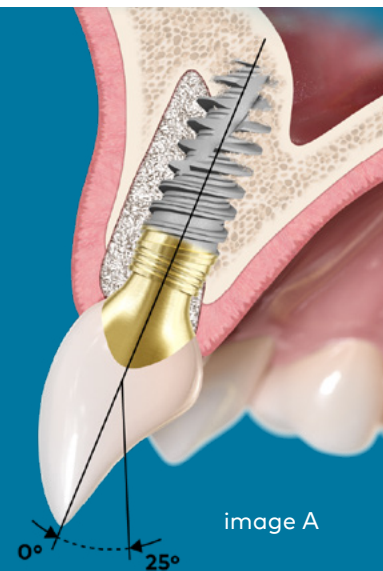
- Clinically proven implant design
- Unique implant design for high primary stability and esthetic excellence

## 2 Restorative portfolio with NobelProcera®

- Angulated screw channel (ASC) Titanium Abutments, golden hue for natural appearance in the transmucosal zone, customized emergence profile and no intraoral cementation (image A)
- ASC Zirconia Abutments, 100% cement free, full contour zirconia or veneered (page 2, image B)

## 3 Regenerative solutions using creos™

- Fulfills the functional and esthetic demands by promoting regeneration of bone
- Solid foundation for dental implant treatments



### Clinically proven implant design

- **Proven survival after implant repositioning<sup>1</sup>.** Reverse-cutting flutes with apical drilling blades allow experienced clinicians to adjust and optimize implant position, especially in extraction socket.
- **Proven clinical success when placed in extraction sockets.** Thread design and apical drilling blades help achieve high primary stability in compromised bone.
- **Consistent long-term bone and soft tissue maintenance.** The back-tapered coronal design, built-in platform shifting and conical connection have been designed to optimize bone and soft tissue volume.

### TiUltra™ surface, advanced technology for osseointegration

- Applied in the collar region, it features surface chemistry and topography that are designed to promote **early osseointegration and to support bone stability.**

### More than 15 years' clinical experience



**85**

Clinical studies **published**



**5,500+**

Patients **treated**



**21,000+**

NobelActive® implants **placed\***

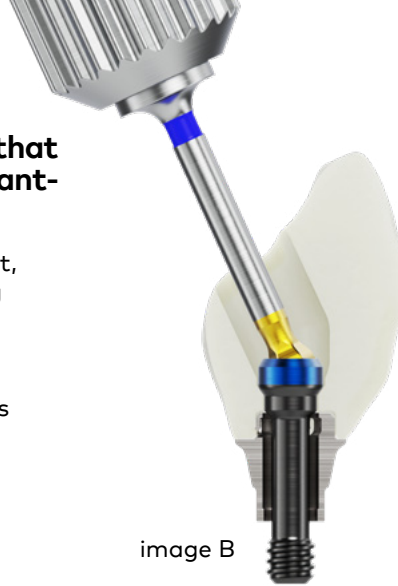


**Designed to immediately place and load**

\* Clinical data combines NobelActive® with both TiUnite® and TiUltra™ surfaces. NobelActive® TiUltra™ launched in 2019.  
\*\* Mean survival rate with follow-up of up to 12 years.

**NobelProcera® is a premium solution that provides individualized, high-end implant-based restorations**

- Achieving a precise fit between the abutment, implant, and clinical screw results in a strong connection, which helps maintain the health of peri-implant hard and soft tissues.
- Opting for a cement-free solution fully avoids the risk associated with cement usage.
- Angulated screw channel (ASC), gain easy access when vertical space is limited, while optimizing occlusal function. Up to 25° angulation in any direction. More flexibility independent of the implant position.



**30+ years**  
of CAD/CAM production  
experience

**100%**  
cement free options

**Pioneer**  
In premium  
customized solutions

**creos™ xenogain collagen**

- Especially recommended for extraction socket management.
- Purified cancellous bovine bone mineral granules and 10% porcine collagen.
- Supplied in block shapes and cylindrical shape (in a syringe) for convenient and precise application.



Syringe

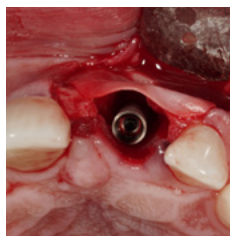


Block

**Immediate implant placement in the anterior region using all solutions from NobelActive® implant, creos™ xenogain, to NobelProcera®**



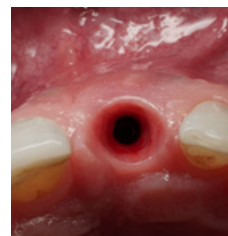
Single case in the anterior region



NobelActive® implant placement



Grafting with creos™ xenogain



Soft tissue follow up after immediate temporization



Final restoration with NobelProcera®

courtesy of Dr. Brian Goodacre



See more clinical cases

1. Cullum D, Hermans M, Hugo O. Long-Term Survival Analysis of 361 Variable Thread Tapered Implants Placed Across a Wide Variety of Indications: Real World Data. Poster presented at: AO 2020 Annual Meeting in Seattle, WA – March 18-21;

89112 GB 2403 © Nobel Biocare Services AG, 2024 All rights reserved. Disclaimer: Nobel Biocare, the Nobel Biocare logotype and all other trademarks are, if nothing else is stated or is evident from the context in a certain case, trademarks of Nobel Biocare. Please refer to Trademarks | Nobel Biocare for more information. Product images are not necessarily to scale. All product images are for illustration purposes only and may not be an exact representation of the product. Some products may not be regulatory cleared/ released for sale in all markets. Please contact the local Nobel Biocare sales office for current product assortment and availability. Caution: Federal (United States) law or the law in your jurisdiction may restrict this device to sale by or on the order of a dentist or a physician. See Instructions For Use for full prescribing information, including indications, contraindications, warnings and precautions.

