

Maxillary full-arch rehabilitation using the new NobelZygoma™ TiUltra™ implants

Prof. Enrico Agliardi
Italy





Prof. Enrico Agliardi

Patient description:

A 72-year-old female with no systemic conditions and a history of failing implants and grafts in the left upper side.

Clinical situation:

The patient presents failing residual teeth in the upper jaw and a failing implant in region 23. She has recurrent sinusitis due to an oral antral communication in region 24-25.

Proposed surgical treatment:

Extraction of the remaining maxillary teeth with immediate implant placement, consisting of two anterior NobelSpeedy® Groovy implants, one tilted NobelSpeedy® Groovy in region 13 of dimension 4mm and a 37.5mm NobelZygoma™ 0° TiUltra™ implants in region 25. The plan includes immediate loading with a pre-fabricated provisional PMMA prosthesis.

Temporization:

Immediate loading of the implants with a PMMA provisional prosthesis, secured on temporary Mult-unit Abutments during the initial healing phase.

Surgery date(s):

18-9-2024

Total treatment time:

6 months including the definitive prosthesis.
The provisional prosthesis was delivered the same day of the surgery.



Prof. Enrico Agliardi

Testimonial

The NobelZygoma™ TiUltra™ 0° is a great leap forward from the previous generation of zygomatic implants. The small diameter and conical connection offer advantages both surgically and prosthetically.

Furthermore, the TiUltra surface ensures minimal tissue trauma making them more stable over time. In addition to all this, the new drill system offers optimal implant site preparation in every anatomical situation and greatly simplifies every single step.

The entire system for treating patients with severe maxillary atrophy using zygomatic implants now has a new gold-standard thanks to Nobel Biocare.

**Initial
Situation**

**Data
collection**

**Treatment
planning**

**Surgical
procedure**

**Post-surgical
scan**

**Immediate
Provisional**

**Phase 1
Check-up**



Patient initial situation

**Initial
Situation**

**Data
collection**

**Treatment
planning**

**Surgical
procedure**

**Post-surgical
scan**

**Immediate
Provisional**

**Phase 1
Check-up**



Patient initial situation

**Initial
Situation**

**Data
collection**

**Treatment
planning**

**Surgical
procedure**

**Post-surgical
scan**

**Immediate
Provisional**

**Phase 1
Check-up**



Patient initial situation

**Initial
Situation**

**Data
collection**

**Treatment
planning**

**Surgical
procedure**

**Post-surgical
scan**

**Immediate
Provisional**

**Phase 1
Check-up**



Patient initial situation

**Initial
Situation**

**Data
collection**

**Treatment
planning**

**Surgical
procedure**

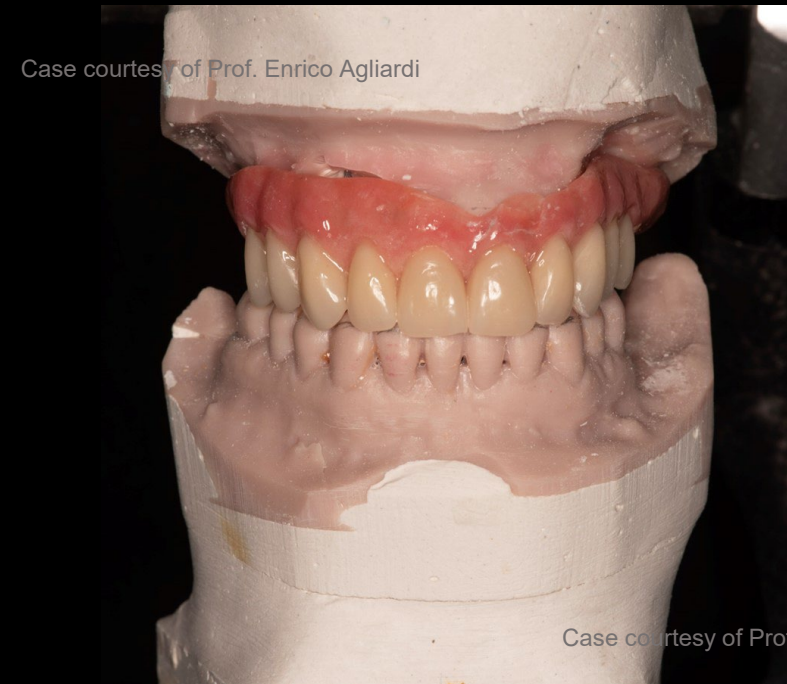
**Post-surgical
scan**

**Immediate
Provisional**

**Phase 1
Check-up**



Provisional prosthesis planned before the surgery



Provisional prosthesis planned before the surgery

Initial
Situation

Data
collection

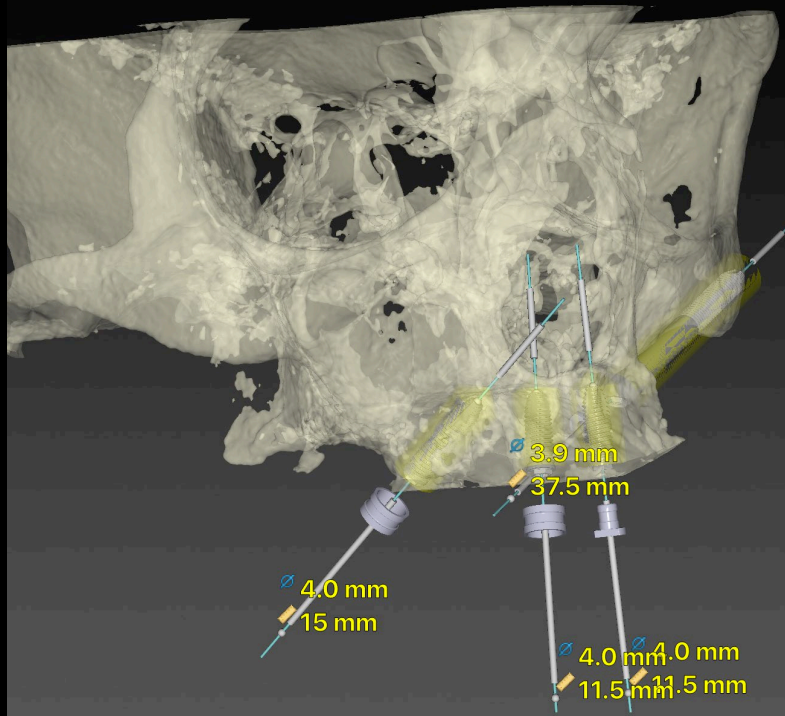
Treatment
planning

Surgical
procedure

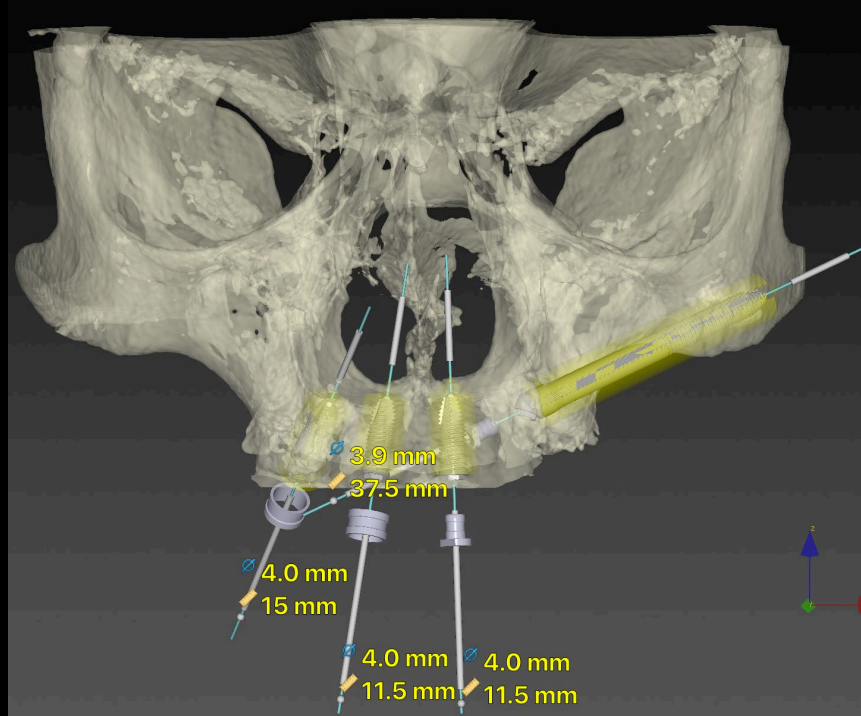
Post-surgical
scan

Immediate
Provisional

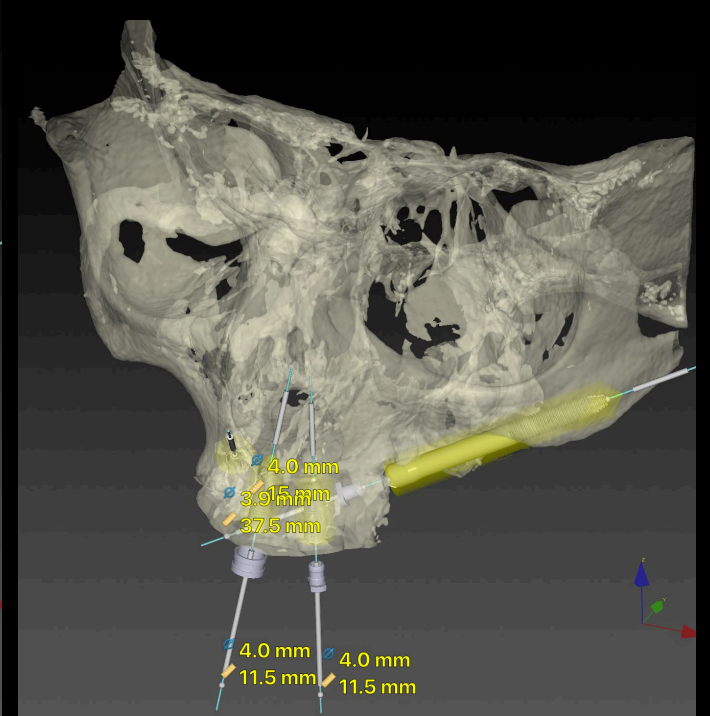
Phase 1
Check-up



Right side view



Planning frontal view



Left side view

**Initial
Situation**

**Data
collection**

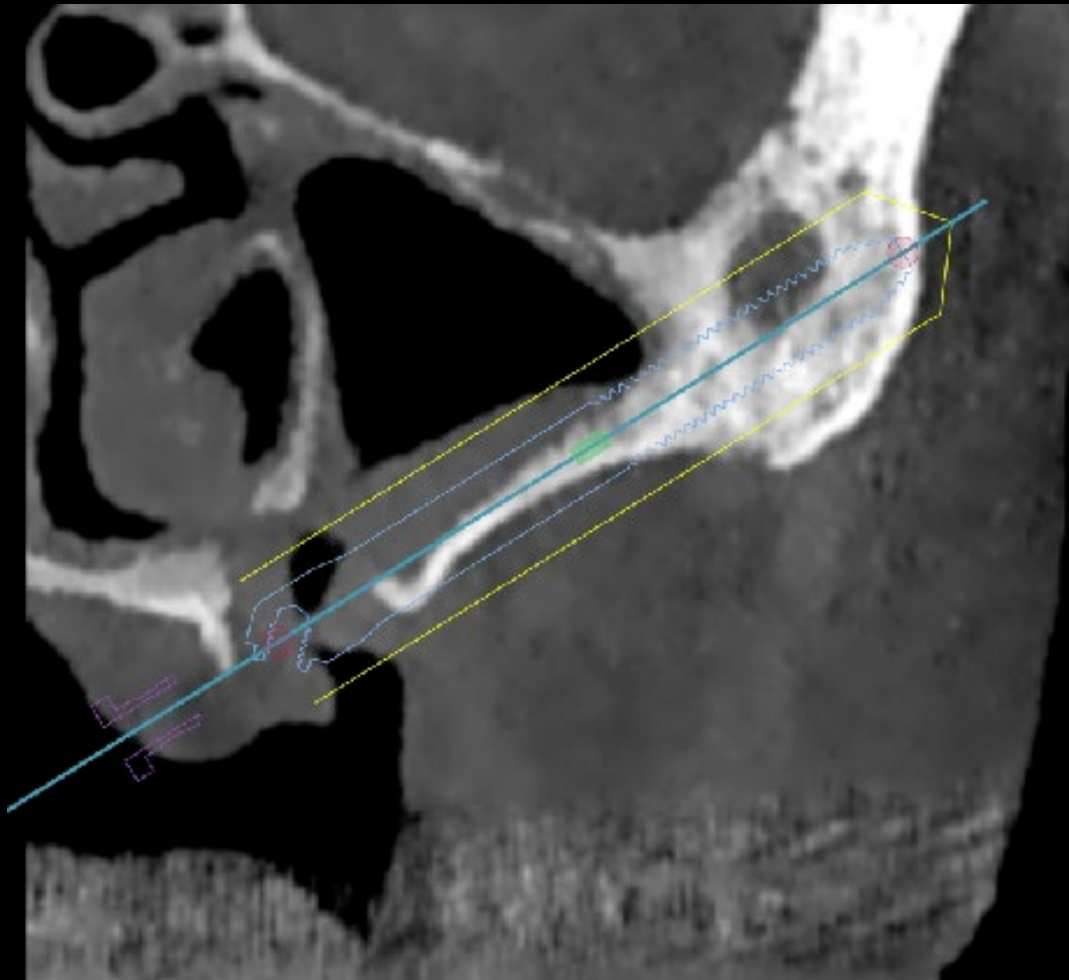
**Treatment
planning**

**Surgical
procedure**

**Post-surgical
scan**

**Immediate
Provisional**

**Phase 1
Check-up**



Cross sectional view of planned zygomatic implant

Initial
Situation

Data
collection

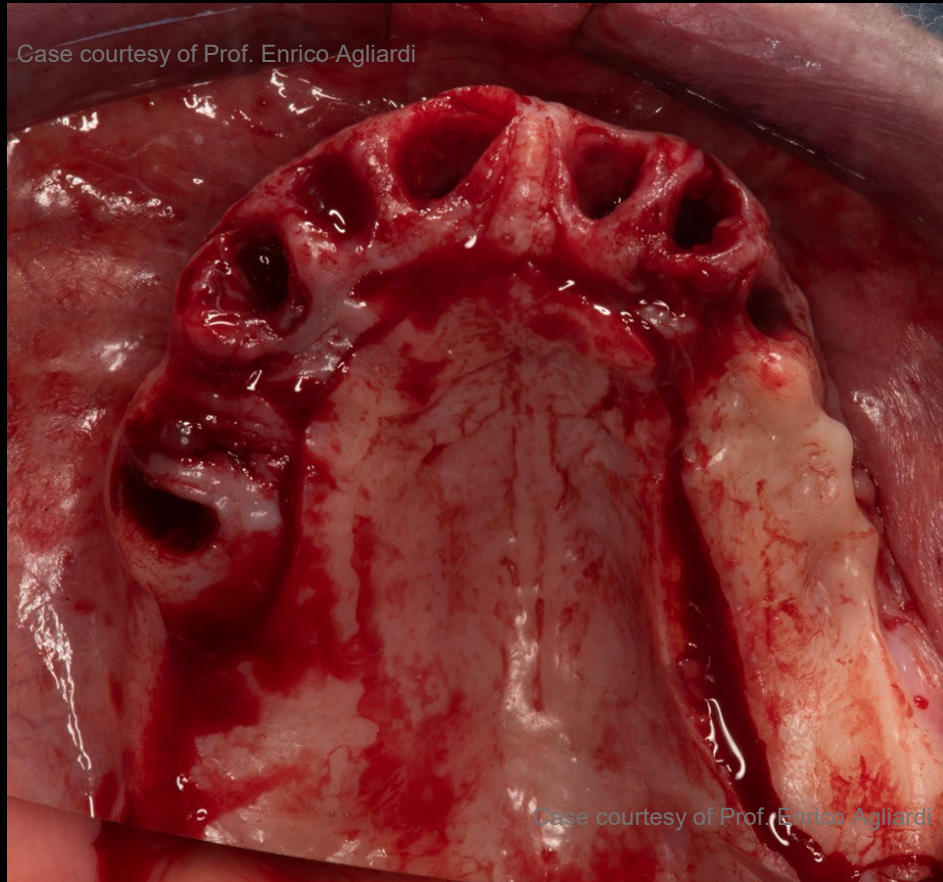
Treatment
planning

**Surgical
procedure**

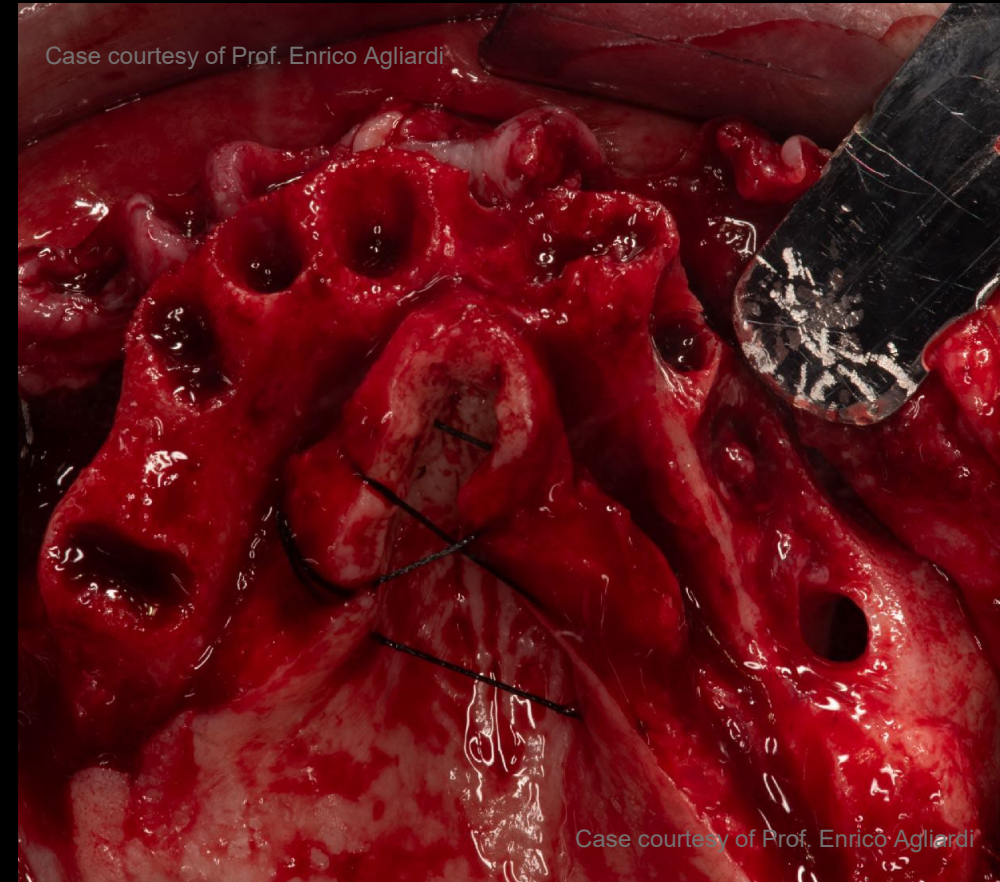
Post-surgical
scan

Immediate
Provisional

Phase 1
Check-up



Extraction of the pre-existing teeth and incision



Flap elevation

Initial
Situation

Data
collection

Treatment
planning

Surgical
procedure

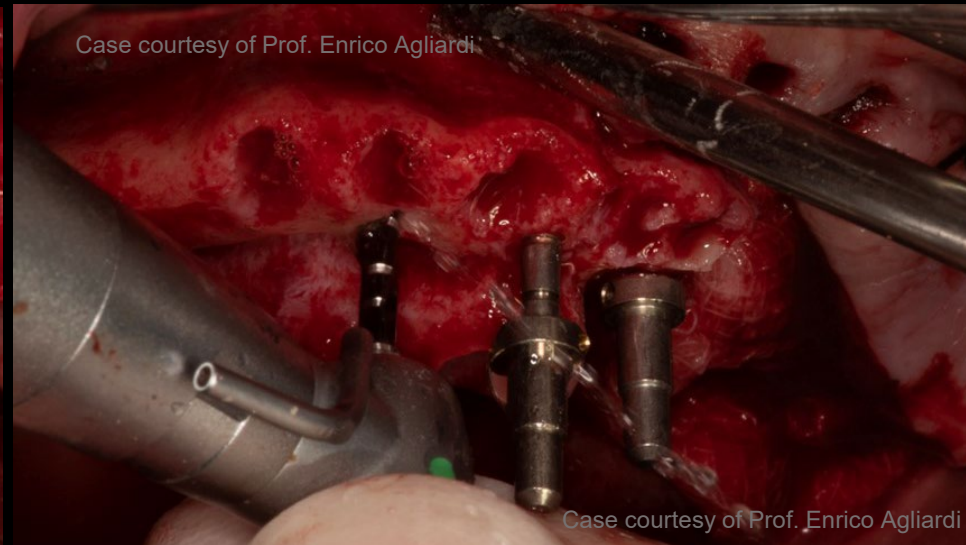
Post-surgical
scan

Immediate
Provisional

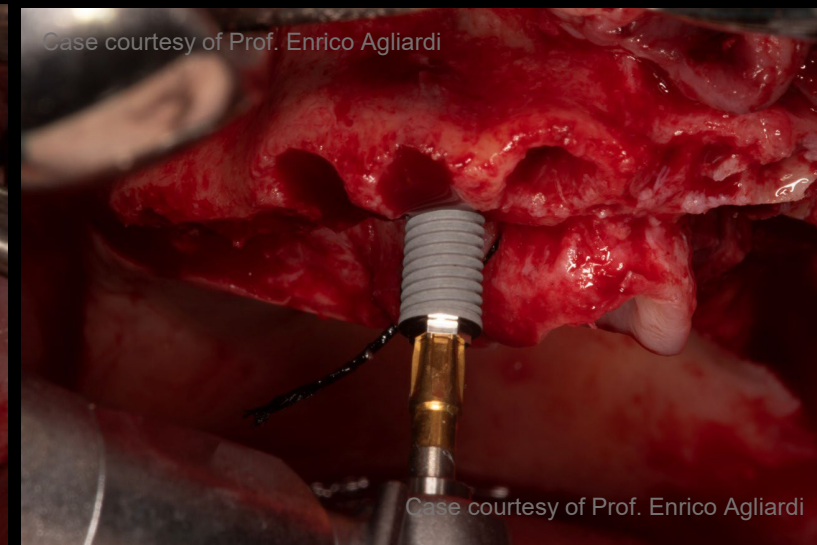
Phase 1
Check-up



Initial osteotomy drill



Direction indicator



NobelSpeedy® implant of 11.5mm * 4 mm

Initial
Situation

Data
collection

Treatment
planning

**Surgical
procedure**

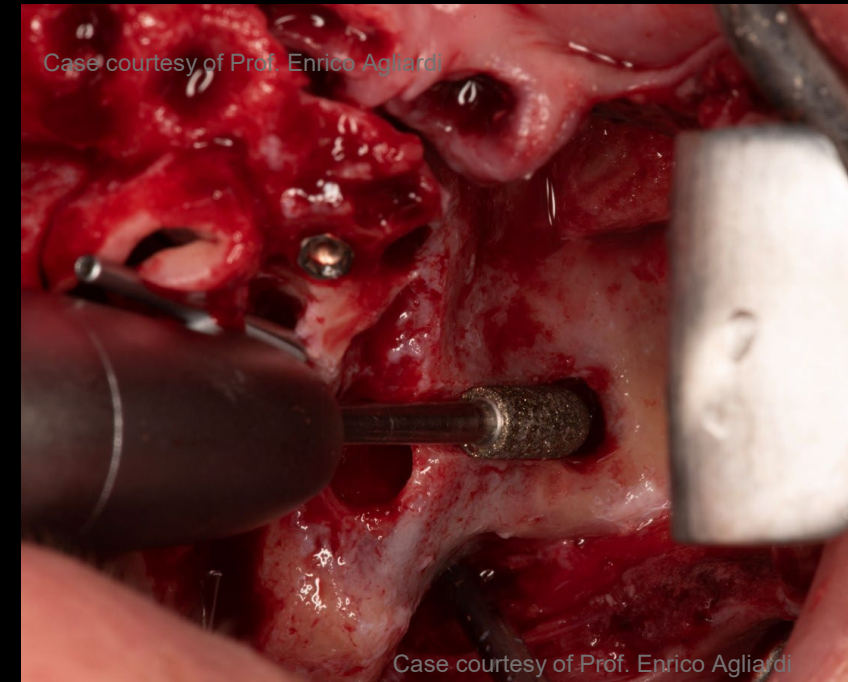
Post-surgical
scan

Immediate
Provisional

Phase 1
Check-up



Design of the window – Extra sinus



Lower border of zygomatic bone identification

**Initial
Situation**

**Data
collection**

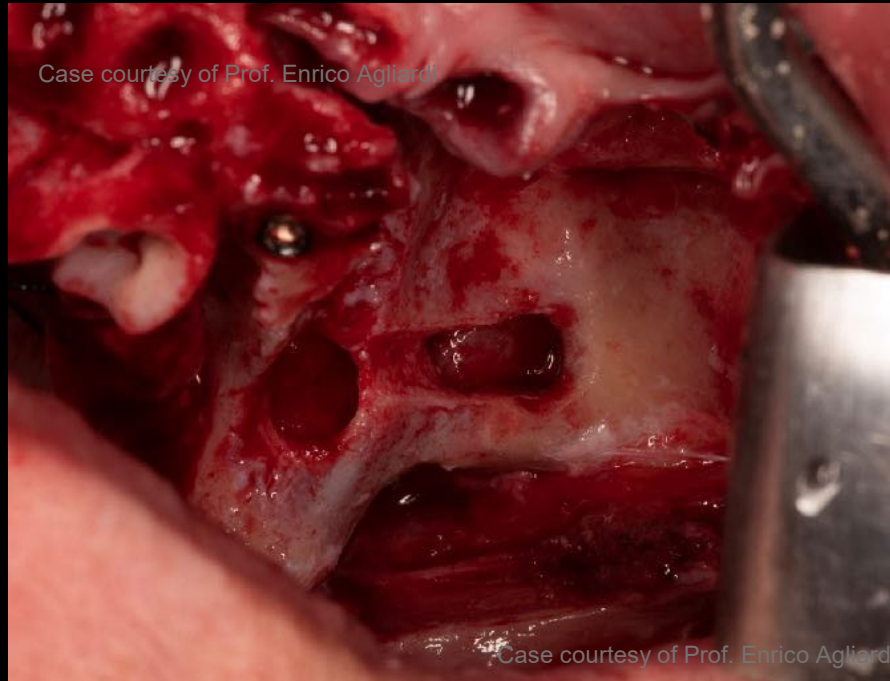
**Treatment
planning**

**Surgical
procedure**

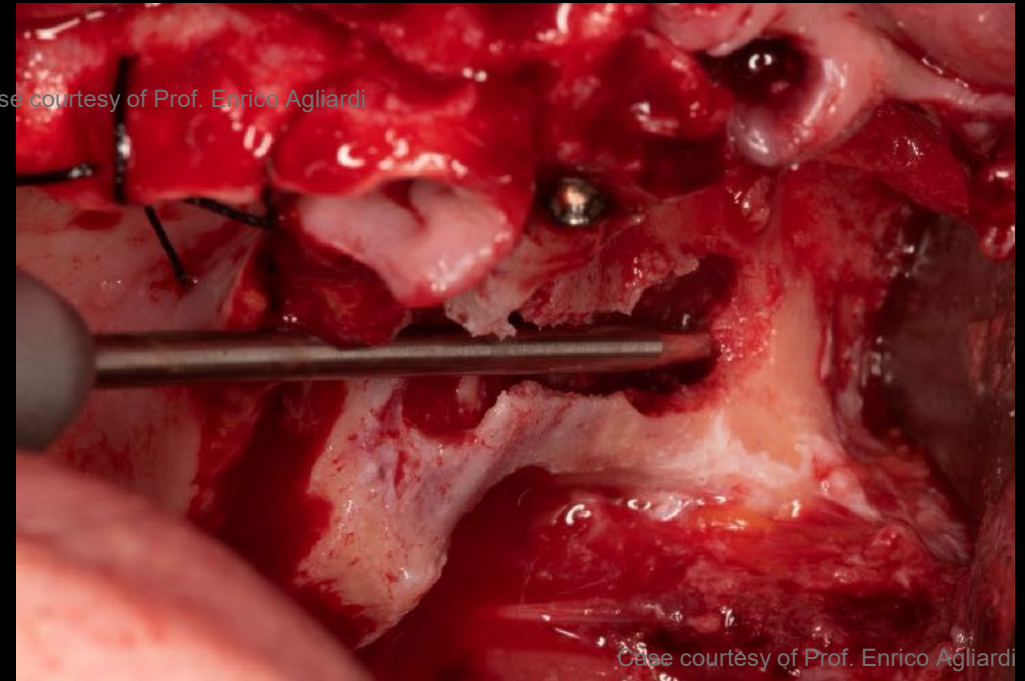
**Post-surgical
scan**

**Immediate
Provisional**

**Phase 1
Check-up**



Complete zygomatic bone visualization



Round bur to mark the entry point

Initial
Situation

Data
collection

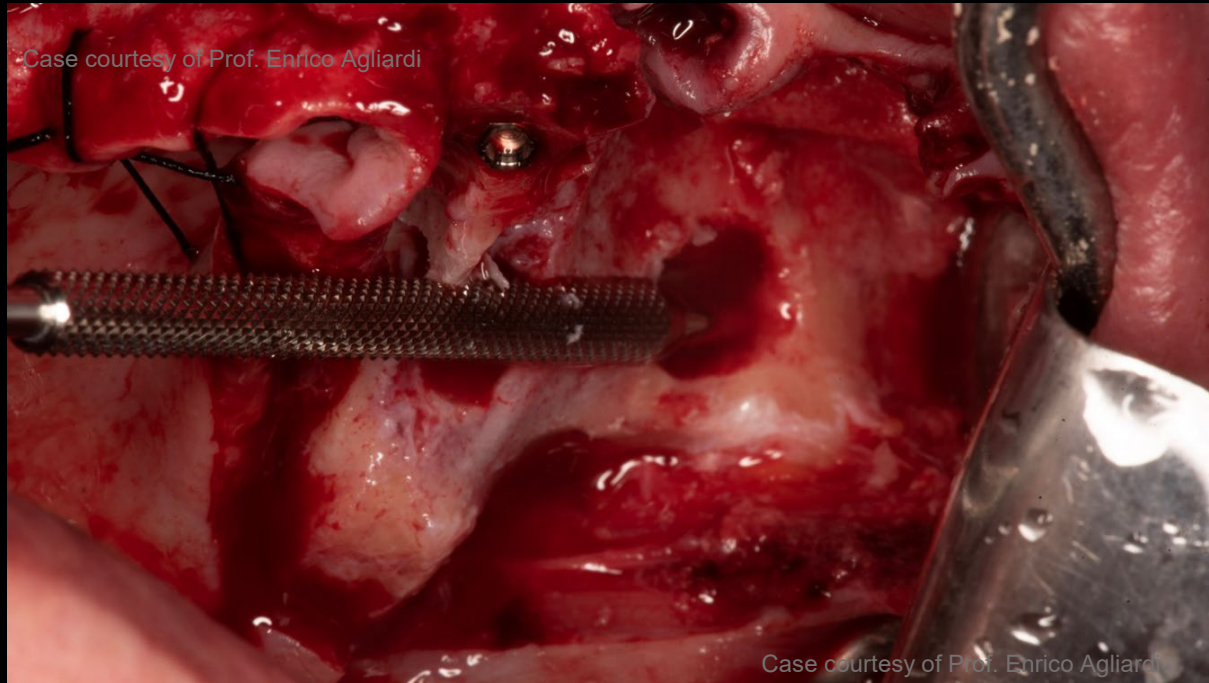
Treatment
planning

Surgical
procedure

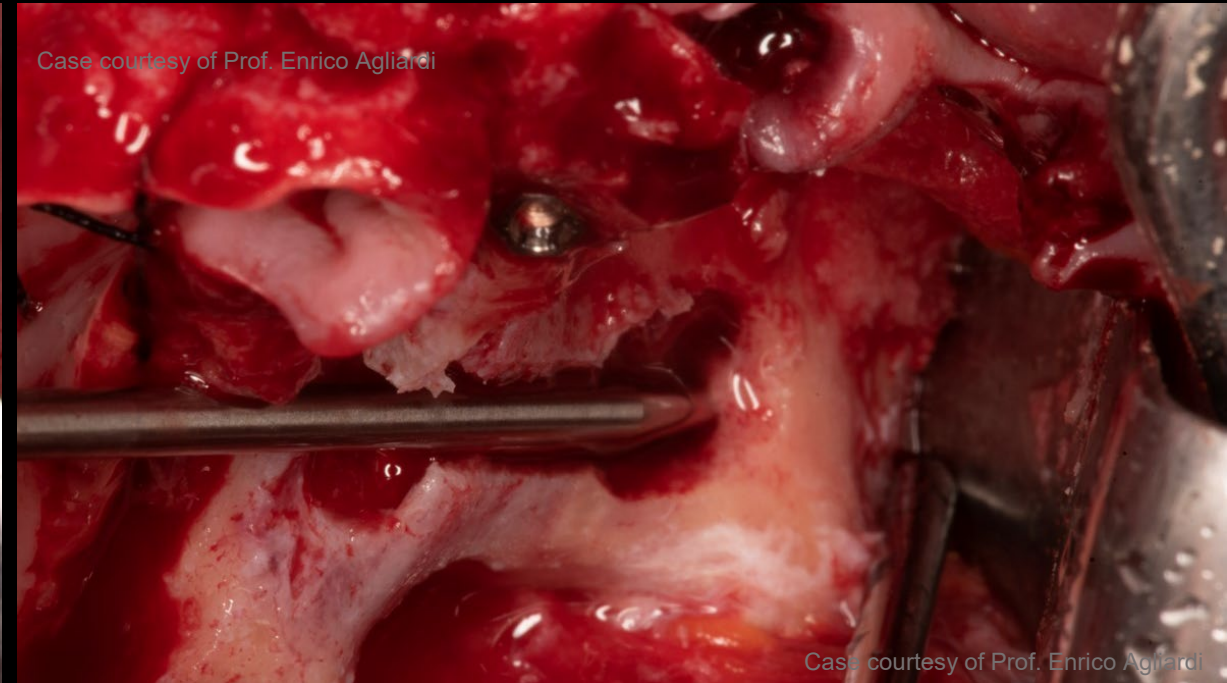
Post-surgical
scan

Immediate
Provisional

Phase 1
Check-up



Lateral bur engages at the mark and creates the
implant path



Precision drill

Initial
Situation

Data
collection

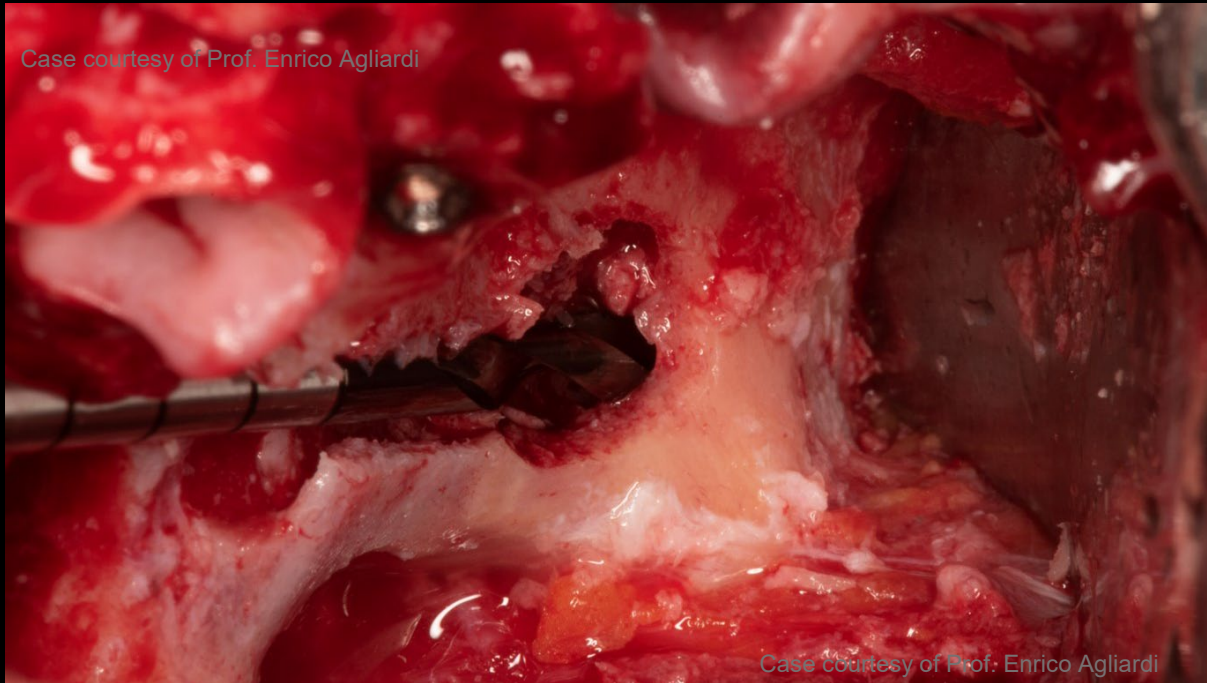
Treatment
planning

Surgical
procedure

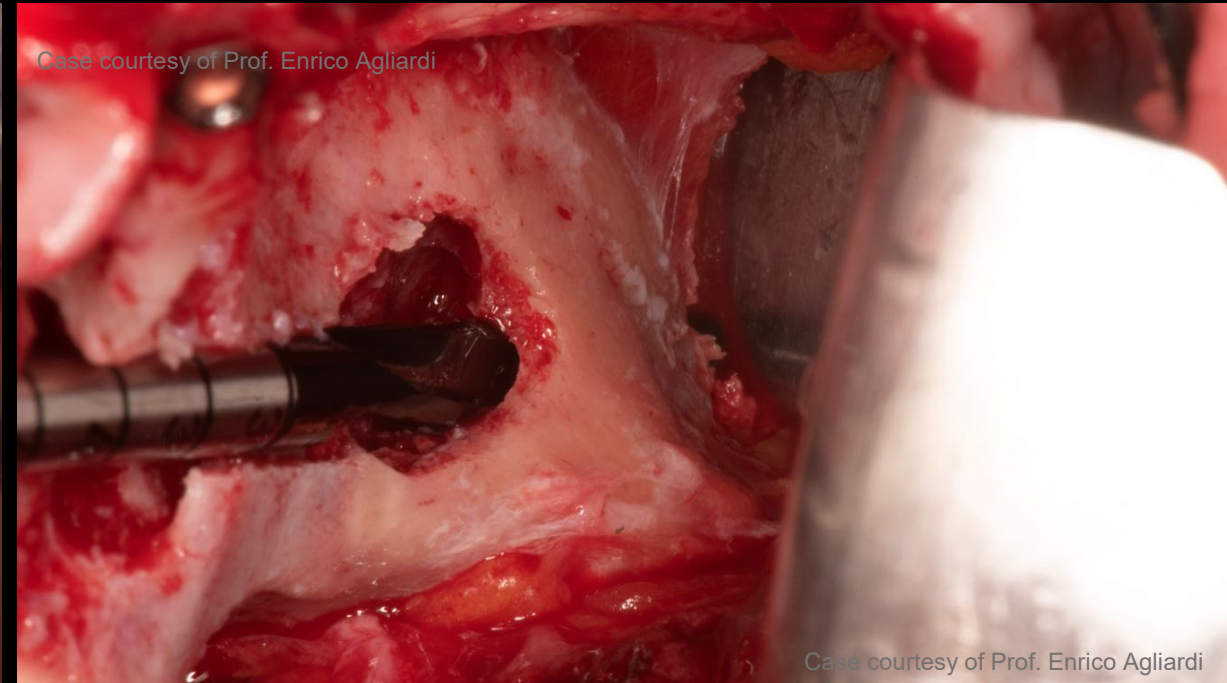
Post-surgical
scan

Immediate
Provisional

Phase 1
Check-up



2.9 mm twist drill



3.5 mm pilot drill

Initial
Situation

Data
collection

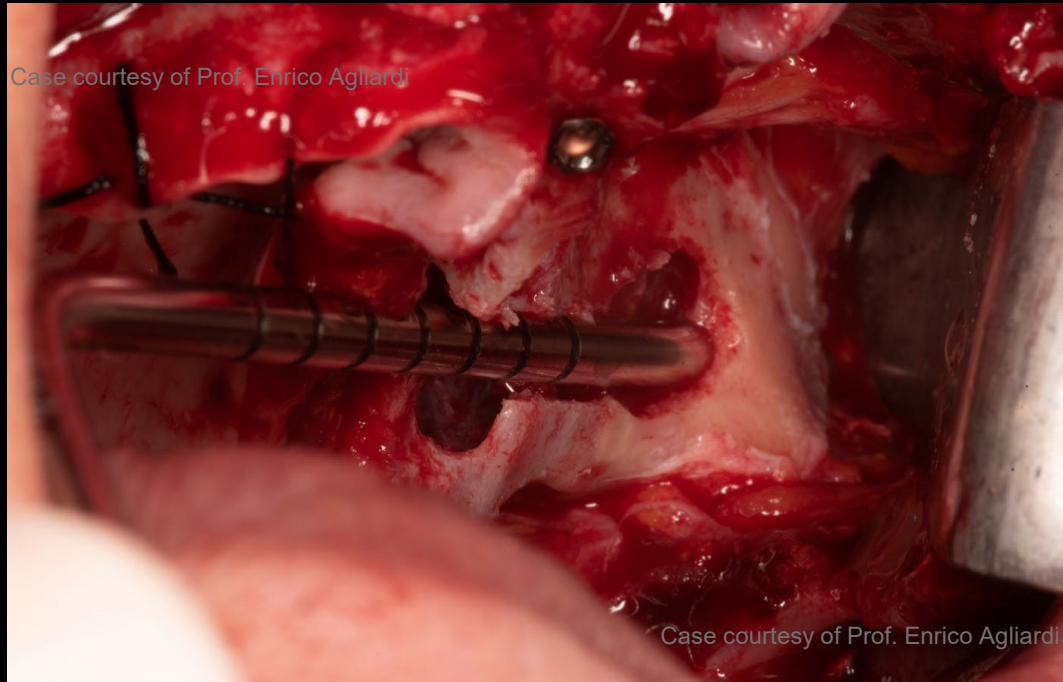
Treatment
planning

**Surgical
procedure**

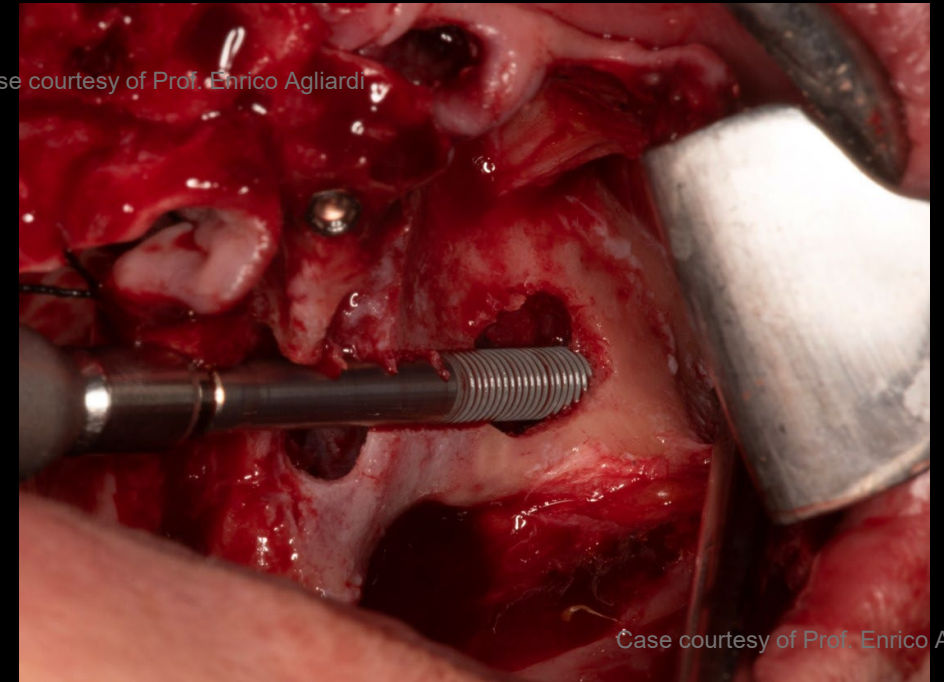
Post-surgical
scan

Immediate
Provisional

Phase 1
Check-up



Depth indicator angled to identify correct implant length



37.5mm NobelZygoma™ 0° TiUltra™ implants in region 25

**Initial
Situation**

**Data
collection**

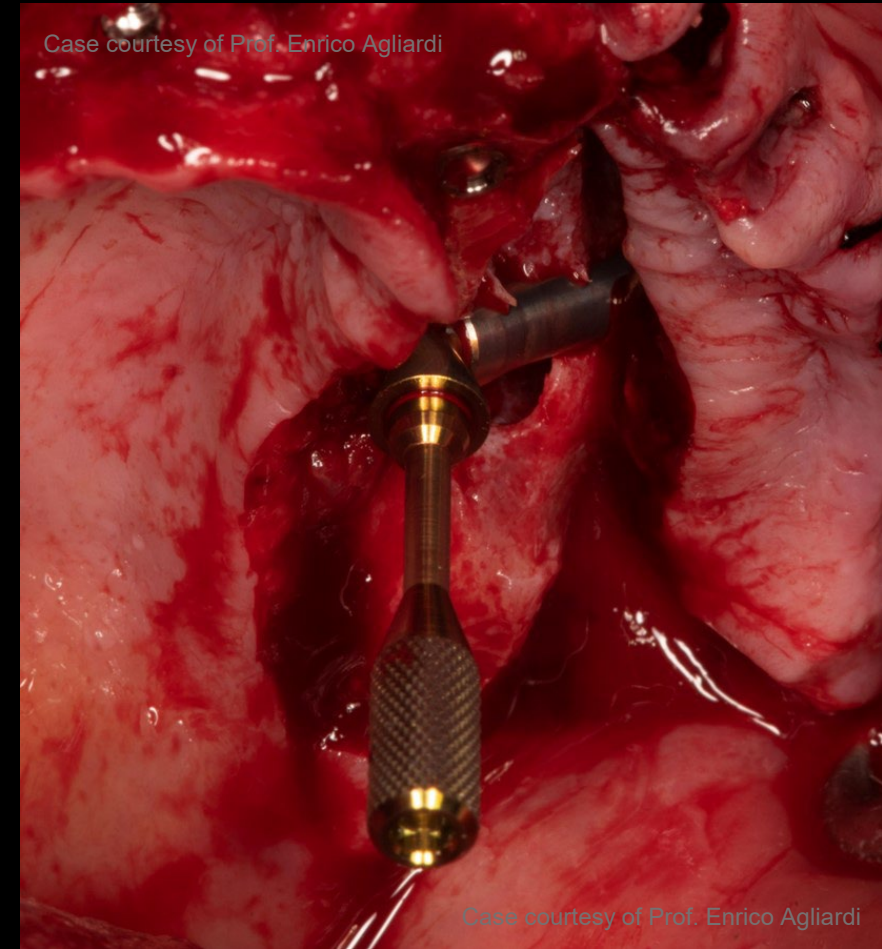
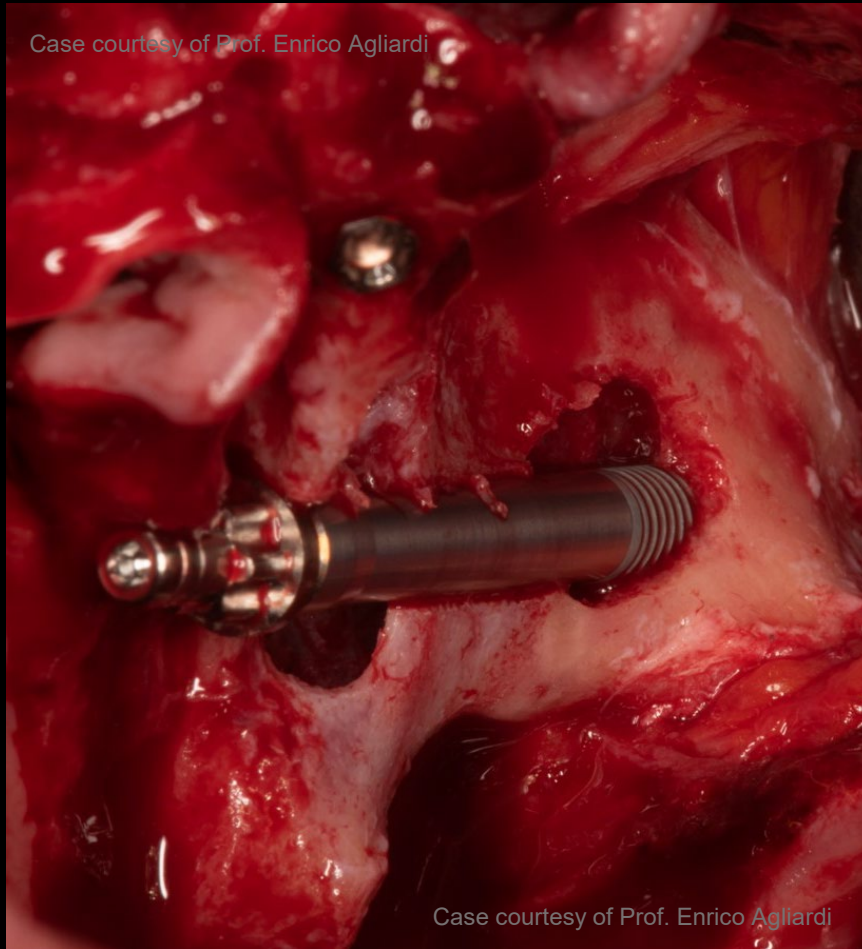
**Treatment
planning**

**Surgical
procedure**

**Post-surgical
scan**

**Immediate
Provisional**

**Phase 1
Check-up**



Zygoma implant final position

Initial
Situation

Data
collection

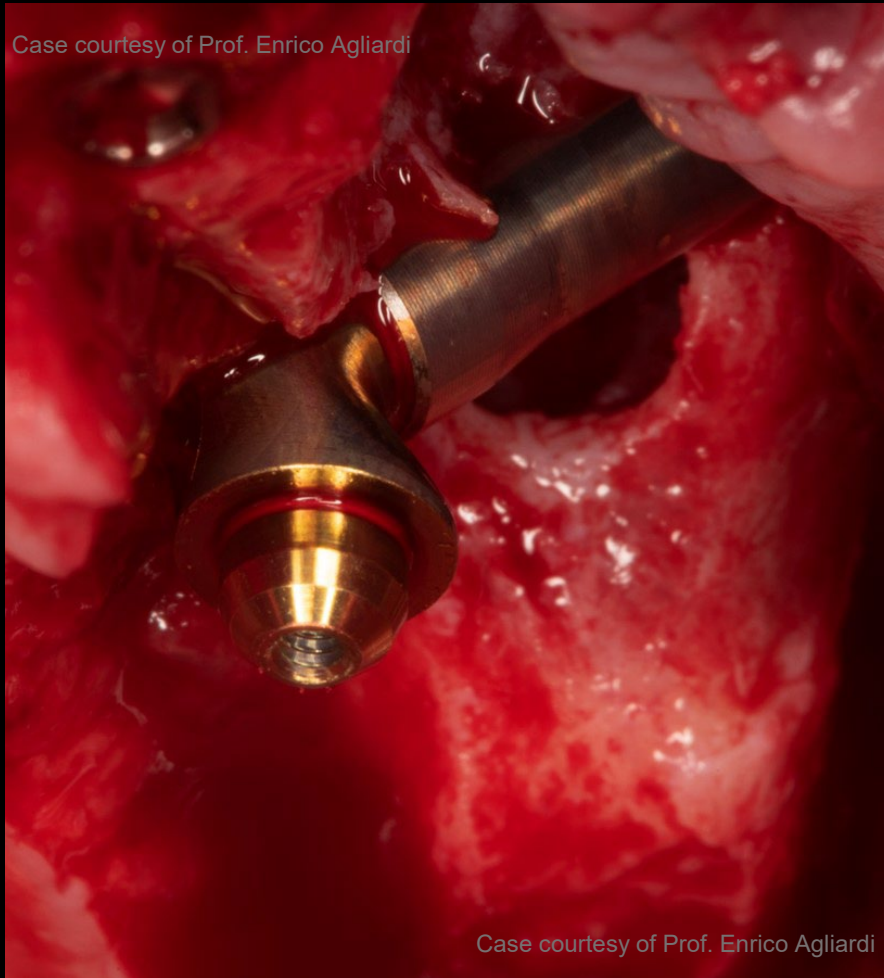
Treatment
planning

Surgical
procedure

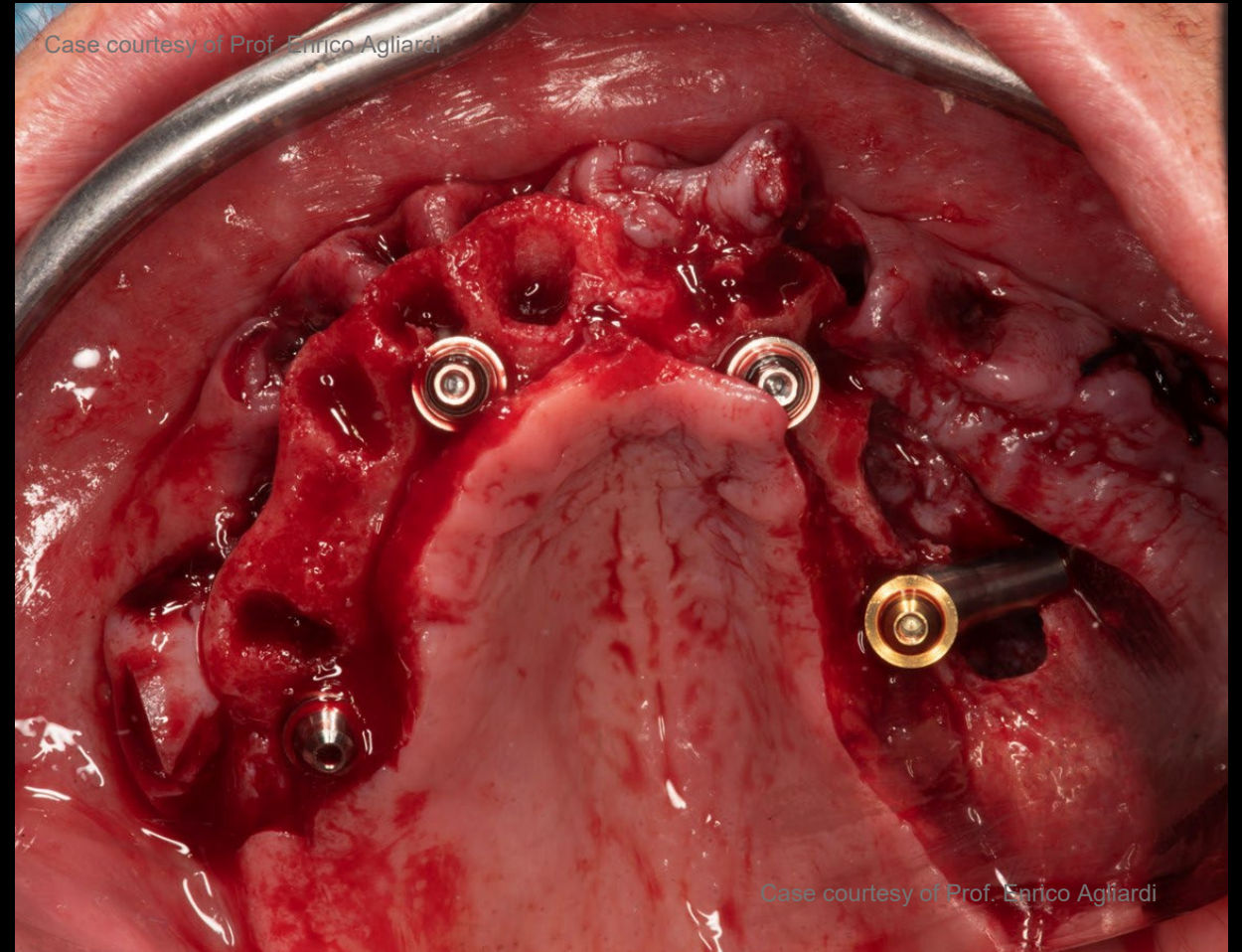
Post-surgical
scan

Immediate
Provisional

Phase 1
Check-up



Final implant position with MUA



Occlusal view post implant and MUA placement

Initial
Situation

Data
collection

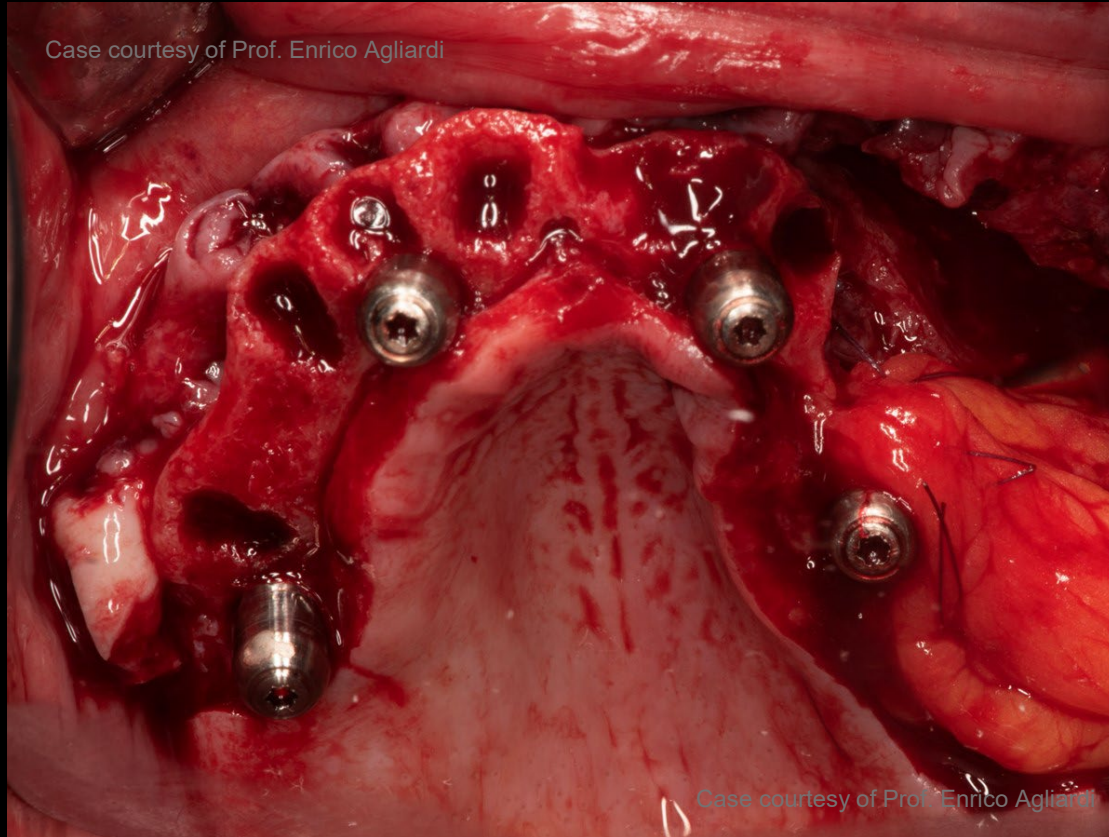
Treatment
planning

Surgical
procedure

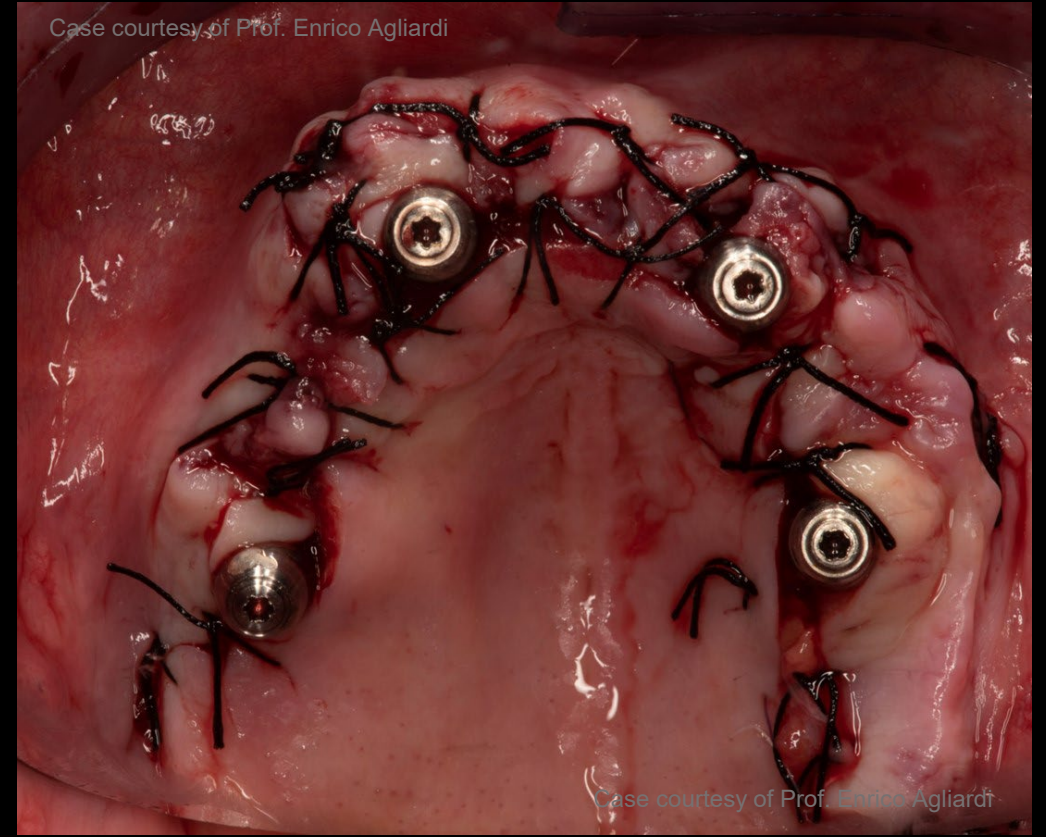
Post-surgical
scan

Immediate
Provisional

Phase 1
Check-up



Nasal and sinus communication Double closure thanks to buccal fat (BICHAT) Pad and soft tissue



Suture

Initial
Situation

Data
collection

Treatment
planning

Surgical
procedure

Post-surgical
scan

Immediate
Provisional

Phase 1
Check-up



Occlusal view of provisional prosthesis



Frontal view of provisional prosthesis

Initial
Situation

Data
collection

Treatment
planning

Surgical
procedure

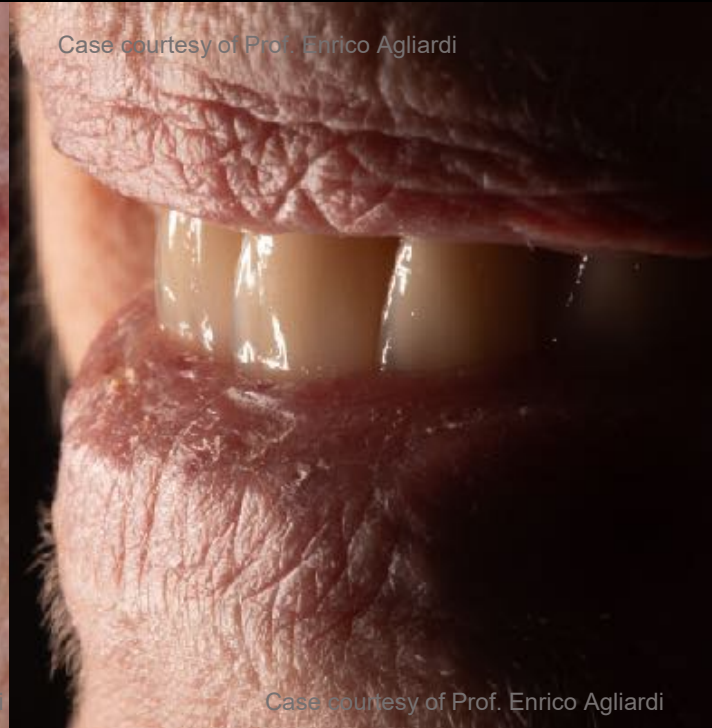
Post-surgical
scan

Immediate
Provisional

Phase 1
Check-up



Pre-op smile



Post-op smile

**Initial
Situation**

**Data
collection**

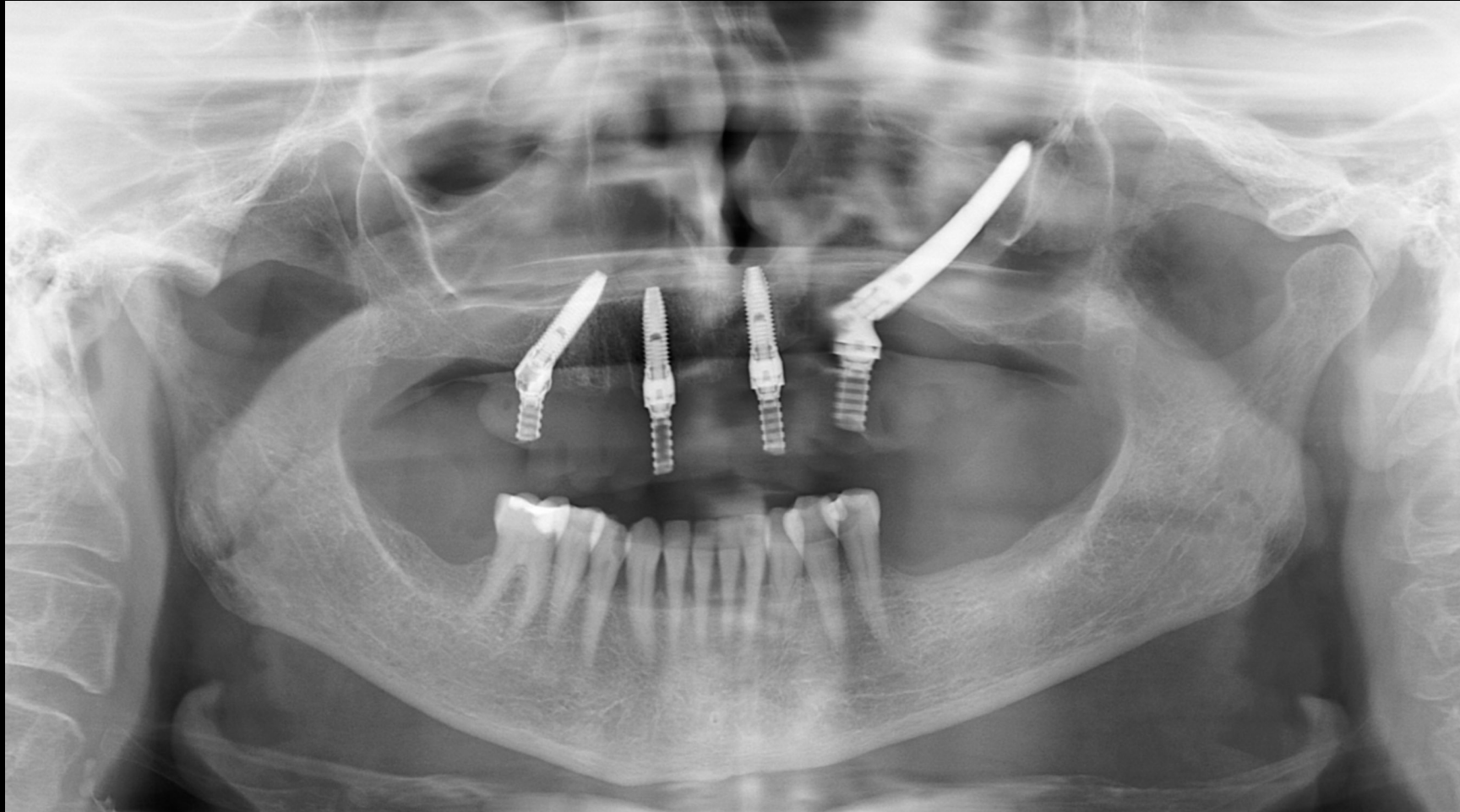
**Treatment
planning**

**Surgical
procedure**

**Post-surgical
scan**

**Immediate
Provisional**

**Phase 1
Check-up**



Follow-up X-ray post implant placement

Case courtesy of Prof. Enrico Agliardi



GMT 93346 GB 2410 © Nobel Biocare Services AG, 2024. All rights reserved. Distributed by: Nobel Biocare. Nobel Biocare, the Nobel Biocare logotype and all other trademarks are, if nothing else is stated or is evident from the context in a certain case, trademarks of Nobel Biocare. Please refer to nobelbiocare.com/trademarks for more information. Product images are not necessarily to scale. All product images are for illustration purposes only and may not be an exact representation of the product. Please contact the local Nobel Biocare sales office for current product assortment and availability. Disclaimer: For prescription use only. Caution: Federal (United States) law or the law in your jurisdiction may restrict this device to sale by or on the order of a licensed clinician, medical professional or physician. See Instructions For Use for full prescribing information, including indications, contraindications, warnings and precautions. Nobel Biocare does not take any liability for any injury or damage to any person or property arising from the use of this clinical case. This clinical case is not intended to recommend any measures, techniques, procedures or products, or give advice, and is not a substitute for medical training or your own clinical judgement as a healthcare professional. Viewers should never disregard professional medical advice or delay seeking medical treatment because of something they have seen in this clinical case. Full procedure is not shown. Certain sequences have been cut. Please refer to applicable IFUs for full instruction.